



Montana Fact Sheet

Facts, figures & discussion about greater sage-grouse



Brief Discussion about GRSG in Montana

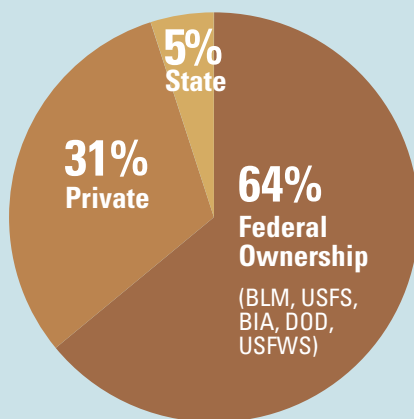
With more than 900 leks and an estimated 18 percent of the total greater sage-grouse population, Montana is the northern-most stronghold for greater sage-grouse and is key to the species' survival. Big Sky State populations also play an important role in connectivity with greatly reduced populations to the north (Canada) and east (the Dakotas). Unlike some western states, about two-thirds of Montana's sage-grouse habitat is on non-federal land. In northeastern Montana, conversion of sagebrush to cropland is a major threat to sage-grouse, along with disturbance related to energy development.

General Facts About Greater Sage-grouse in Montana

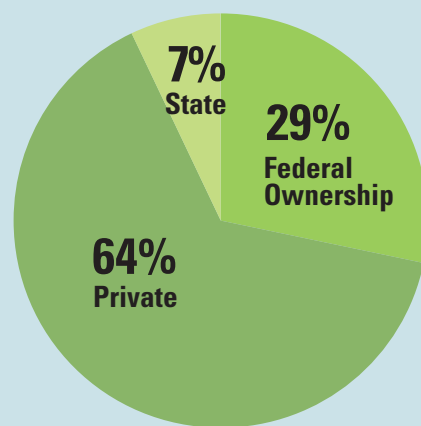
- Long-lived, ground-nesting resident game bird, largest grouse species in North America
- Currently managed by Montana Fish, Wildlife and Parks
- Occurs across 43 of 54 counties in state
- Range: 33,586,523 acres, 52,479 square miles in state/
- Uses communal breeding grounds called leks; 900 in 2010
- Sagebrush dependent, particularly in winter
- In 2014, Montana closed more than half of sage-grouse range to hunting. Hunters were limited to four birds during the September season.

Land Ownership (COT report)

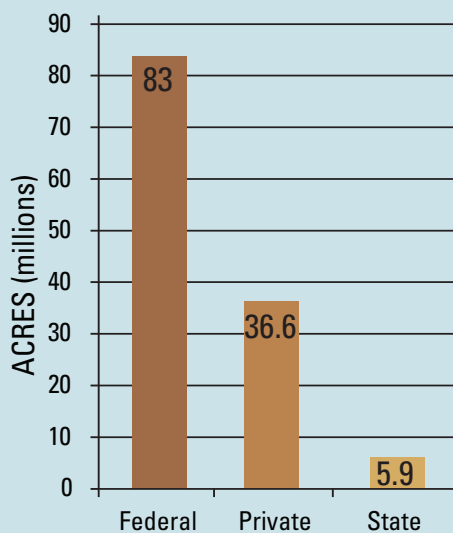
Range-wide (%)



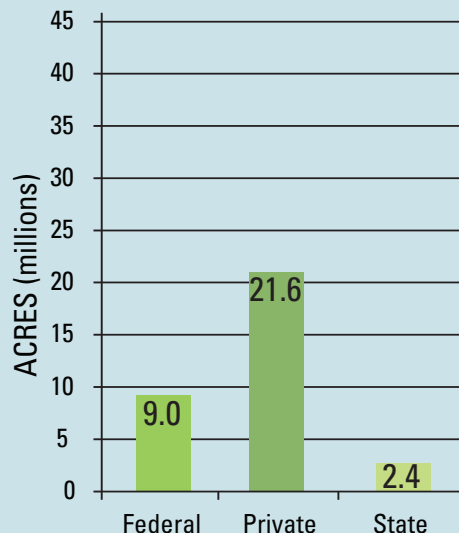
Montana (%)



Range-wide (acres)



Montana (acres)





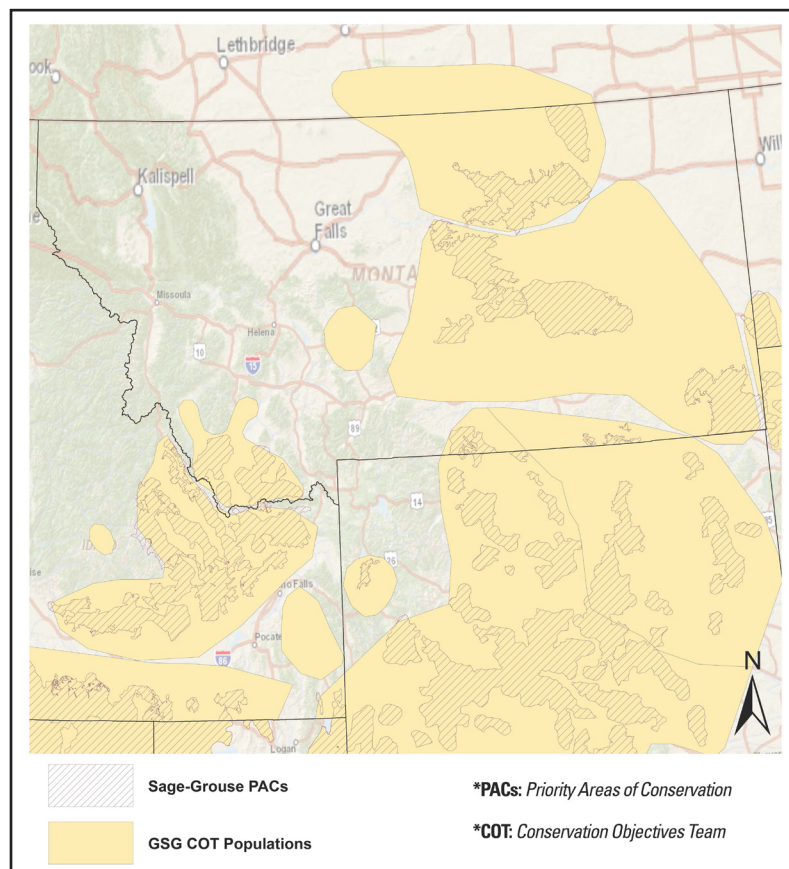
Male greater sage-grouse/Jeanne Stafford USFS



Greater sage-grouse hens/ © Tatiana Gettelman



Wyoming sagebrush / USFWS



Greater Sage-Grouse PACs and COT Populations - Montana

Land Ownership, **Colorado** Priority Areas of Conservation

- PACs: key habitats essential for long-term viability of GrSG; should be focus of resources
- 75.5 million Total PAC acres, 63% of current range (COT)
- 9,034,558 STATE PAC ACRES, 26 percent of occupied range
- 64% federally owned, 48 million acres

Primary Threats (as identified for Montana populations)

- 1) The primary threats are:
 - Agricultural conversion
 - Energy development and infrastructure
 - **☞** Invasive annual grasses
- 2) Lack of regulatory mechanisms to protect sagebrush
 - 21 BLM and eight Forest Service land use plans under revision

